



## CDC 140

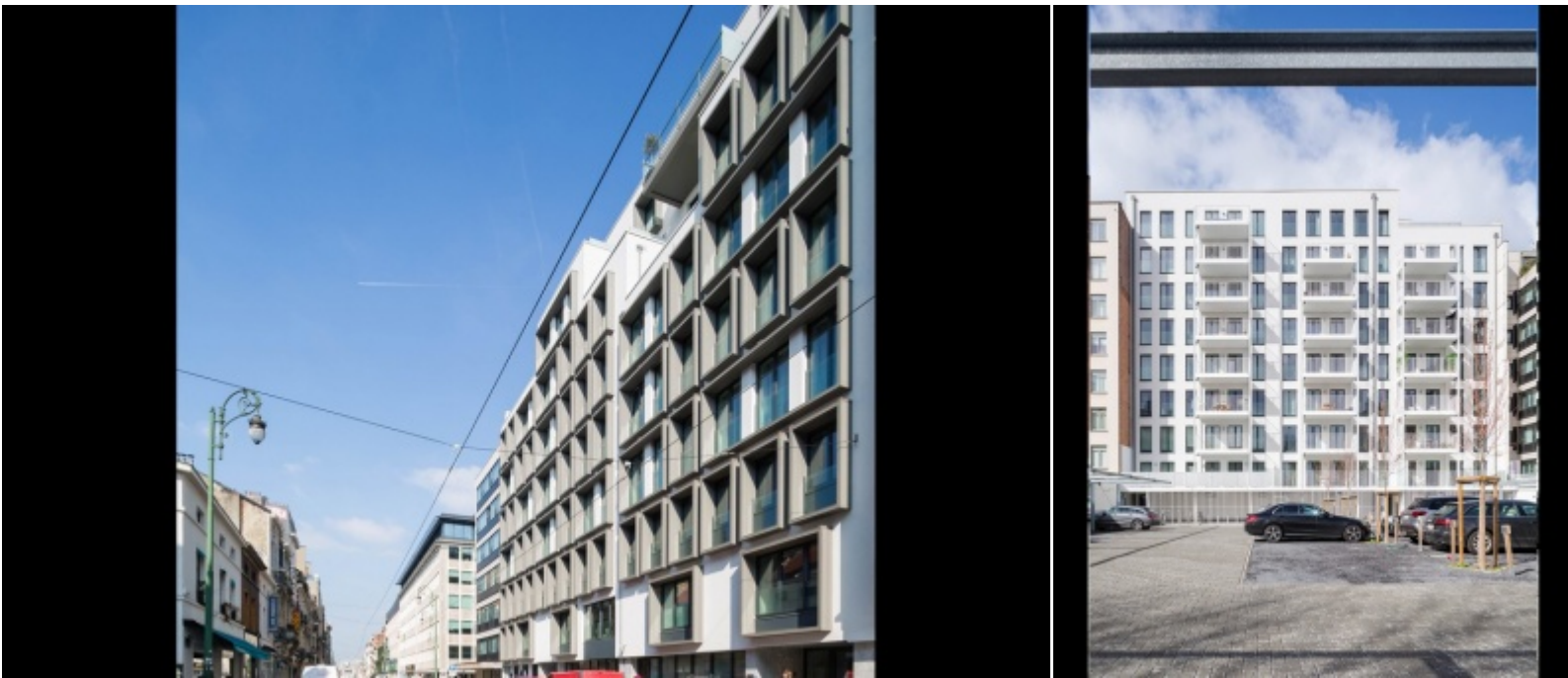
Reassignment of buildings into a residential complex of 42 apartments spread over 8 floors covering a commercial ground floor.

Chaussée de Charleroi, 138  
à 1060 Bruxelles

Located between Ixelles and Saint-Gilles, the new CDC 140 contemporary building brings together 42 new luxury apartments for a demanding clientele.

The new CDC 140 project fits perfectly into the urban context with a car park of 56 parking spaces, also comprising 56 bicycle stands, and an important public transport service. From an aesthetic point of view, it stands out as a remarkable residential complex with large window bays in the front.

An exemplary building for energy efficiency, the CDC 140 has a high insulation coefficient, with voltaic panels and an efficient centralized heating system. Insulation of the building's exterior envelope also reduces energy requirements while enhancing acoustic insulation.



## CDC 140

Property Owner

**THEIA INVEST**

Architect

**Faidherbe & Pinto Architectes**

Structural engineer

**Stoffel & Partners**

Acoustical engineer

**ICA**

PEB engineer

**BATI +E**

Safety coordinator

**Mommaerts-Safety**

Category

Works beginning date

Delivery

Works costs

Flats number

Floors

Overground surface

Basement surface

**Residential**

**09/01/2017**

**08/06/2018**

**6.604.084,00 EUR**

**42**

**G +8**

**5.076 m<sup>2</sup>**

**525 m<sup>2</sup>**

